

MiMO PANEL ANTENNA

Model: DP1727G9P2

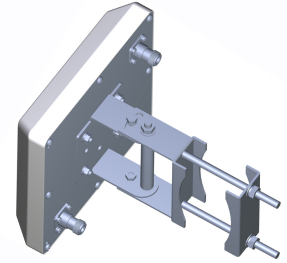
Dual Polarized:X-Polarized/ ± 45 deg, 1710-2700MHz, Max Gain 9.3dBi, Size: 208x208x45mm, ASA Radome

Application:

Indoor/in-building Coverage

LTE System in crowded building to insure data speed

CDMA,GSM, DCS, 3G/UMTS, WiFi, ISM Application



Features:

ASA Radome keep very good UV-Stability for outdoor environment

Suitable for pole mount available

Low, aesthetically pleasing profile

Model	DP1727G9P2
Electrical Specification	
Frequency (MHz)	1710-2700MHz
Polarization	$\pm 45^\circ$
Gain	8.5dBi ~ 9.3dBi
H-plane	$70^\circ \pm 10^\circ$
E-plane	$68^\circ \pm 10^\circ$
VSWR (typ)	<1.8
Nominal Impedance	50 Ω
Isolation	>25dB
Max Power	50 Watts
Mechanical Specification	
Connector	2 x N-female
Radome	ASA, color: white
Dimension	208x208x45mm
Mechanical Tilt	$0^\circ \sim 15^\circ$
Weight	0.7kg (exclude mount kits)
Operating Temperature Range	-40°C to $+70^\circ\text{C}$
Storage Temperature	-50°C to $+75^\circ\text{C}$